

POSITION	A	B	C
9	16.33	24.99	30.81
15	24.66	33.62	39.14
19	29.92	39.03	44.80
23	35.18	44.36	50.30
25	38.38	47.04	53.04
37	54.84	63.50	69.32

General Tolerance	
X. ± 0.50	X.° ± 5°
.X ± 0.20	.X° ± 2°
.XX ± 0.10	.XX' ± 1°
Units : mm	

### Specifications

Current Rating: 5 Amp  
 Operating Temp.: -55°C ~ +105°C  
 Dielectric Strength : 1000V / minute  
 Insulation Resistance: 1000MΩ Min. at 500V DC  
 Contact Resistance: 30 million hms Max.  
 Insulator Material: PBT+30% Glass Fiber (UL94V-0)  
 Contact: Brass  
 Contact Plated: Selective Gold Flash (Standard),  
 Gold Plated On Contact Area,  
 Tin Plated on Solder Area  
 Shell: Steel, Nickel Plated (Standard)  
 Screw: Brass, Nickel Plated

### Part Numbering System

**DS02 - XX F X X X X X**

Series      Insulator Color:

1 = White  
 2 = Blue  
 3 = Black

**Contact Number:**  
 09 15 19 23 25 37 50

**Contact Type:**  
 F = Female

**Contact Plating:**  
 G = Gold Flash  
 S = Selective Gold Flash (Standard)

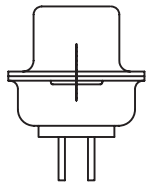
**Shell Plating:**  
 N = Nickel ( Standard)  
 T = Tin  
 Z = Zinc

**Parts Option:**

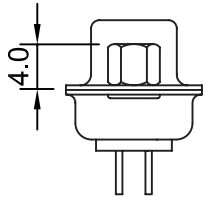
A = No Accessories  
 B = Fixed Jack Screws 4.8x11.8mm  
 C = Fixed Jack Screws 4.8x10.8mm  
 D = Loose Jack Screws 4.8x11.8mm (In Poly Bag)  
 E = Fixed Jack Screws 5.8x10.8mm  
 F = Loose Jack Screws 5.8x10.8mm (In Poly Bag)

**Process Option:**

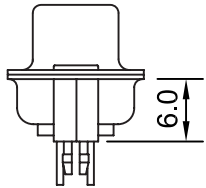
A = Though Hole  
 B = Riveted Board Fork Lock 6.0mm  
 C = Riveted 4.0 Hex Nut (Front)  
 D = Riveted 4.0 Hex Nut (Rear)  
 E = Riveted 6.0 Hex Nut (Front)  
 F = Riveted 6.0 Hex Nut (Rear)  
 G = Non-Riveted 2.0 Hex Nut (Rear)



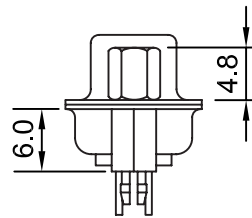
AA TYPE



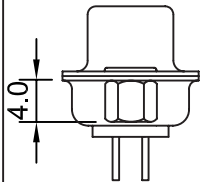
CA TYPE



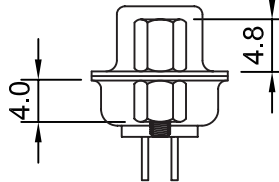
BA TYPE



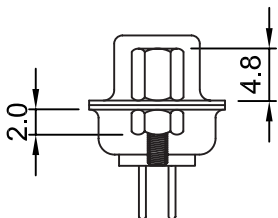
BB TYPE



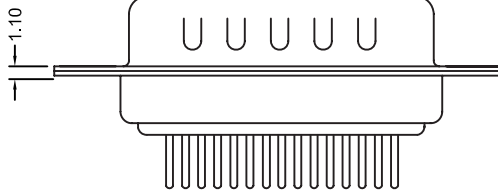
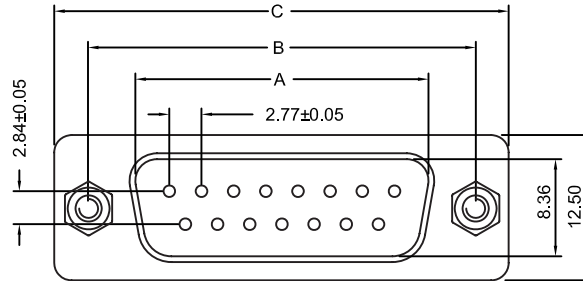
DA TYPE



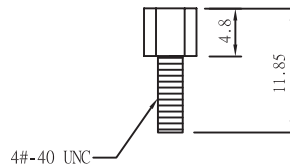
DB TYPE



GB TYPE



Hex Nut



Jack Screw

### Specifications

Current Rating: 5 Amp  
 Operating Temp.: -55°C ~ +105°C  
 Dielectric Strength : 1000V / minute  
 Insulation Resistance: 1000MΩ Min. at 500V DC  
 Contact Resistance: 30 million hms Max.  
 Insulator Material: PBT+30% Glass Fiber (UL94V-0)  
 Contact: Brass  
 Contact Plated: Selective Gold Flash (Standard),  
 Gold Plated On Contact Area,  
 Tin Plated on Solder Area  
 Shell: Steel, Nickel Plated (Standard)  
 Screw: Brass, Nickel Plated

### Part Numbering System

DS02 - XX M X X X X X

Series

Insulator Color:

- 1 = White
- 2 = Blue
- 3 = Black

Parts Option:

- A = No Accessories
- B = Fixed Jack Screws 4.8x11.8mm
- C = Fixed Jack Screws 4.8x10.8mm
- D = Loose Jack Screws 4.8x11.8mm (In Poly Bag)
- E = Fixed Jack Screws 5.8x10.8mm
- F = Loose Jack Screws 5.8x10.8mm (In Poly Bag)

Process Option:

- A = Though Hole
- B = Riveted Board Fork Lock 6.0mm
- C = Riveted 4.0 Hex Nut (Front)
- D = Riveted 4.0 Hex Nut (Rear)
- E = Riveted 6.0 Hex Nut (Front)
- F = Riveted 6.0 Hex Nut (Rear)
- G = Non-Riveted 2.0 Hex Nut (Rear)

Contact Number:  
09 15 19 23 25 37 50

Contact Type:  
M = Male

Contact Plating:  
G = Gold Flash  
S = Selective Gold Flash (Standard)

Shell Plating:  
T = Tin  
N = Nickel ( Standard)  
Z = Zinc  
P = Tin + Dimple  
Q = Nickel + Dimple

POSITION	A	B	C	D
9	16.92	24.99	30.81	19.28
15	25.25	33.62	39.14	27.51
19	30.60	39.03	44.80	33.02
23	35.90	44.36	50.30	38.15
25	38.96	47.04	53.04	41.30
37	55.42	63.50	69.32	57.71

General Tolerance	
X. ± 0.50	X.° ± 5°
.X ± 0.20	.X° ± 2°
.XX ± 0.10	.XX° ± 1°
Units : mm	